



Sintelsystems™

[972] POS-TECH

[972] 767-8324



UPRestaurant POS

Training Guide

Adding a Tare Weight



Adding a Tare Weight

Introduction:

This section will show you how to add a new tare weight. It is illegal in some states to charge for non-perishable inventory and require to tare certain menu items. Check with your local Department of Weights and Measures office for specific details.

To **DEFINE** a tare, follow steps 1 through 4; to **APPLY** a tare, follow steps 5 through 7.

Step 1



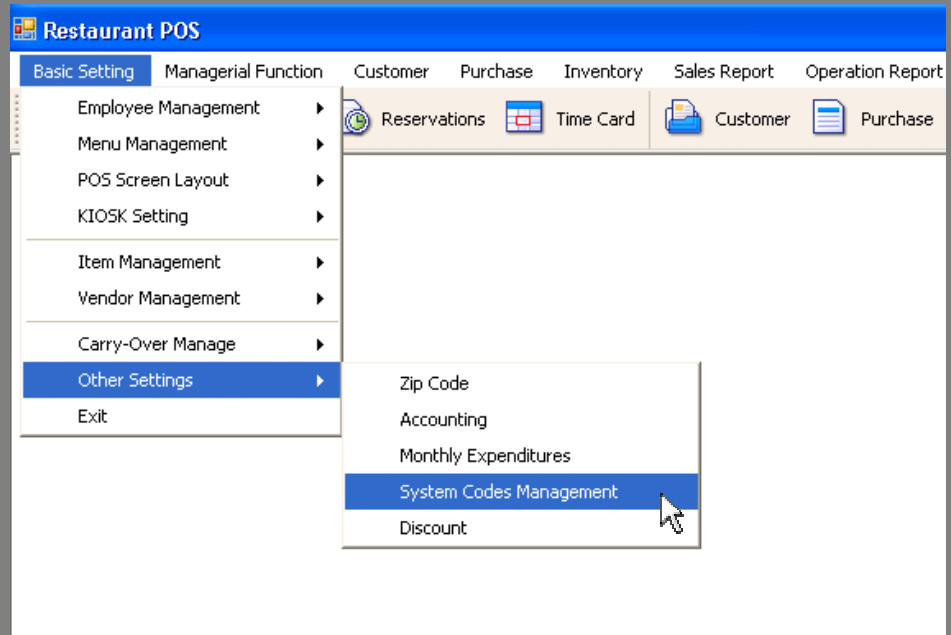
Open **Operation Management** from your desktop.
Use your manager's code to login to the system.



If this is your first time logging in, the default code is 9999

Step 2

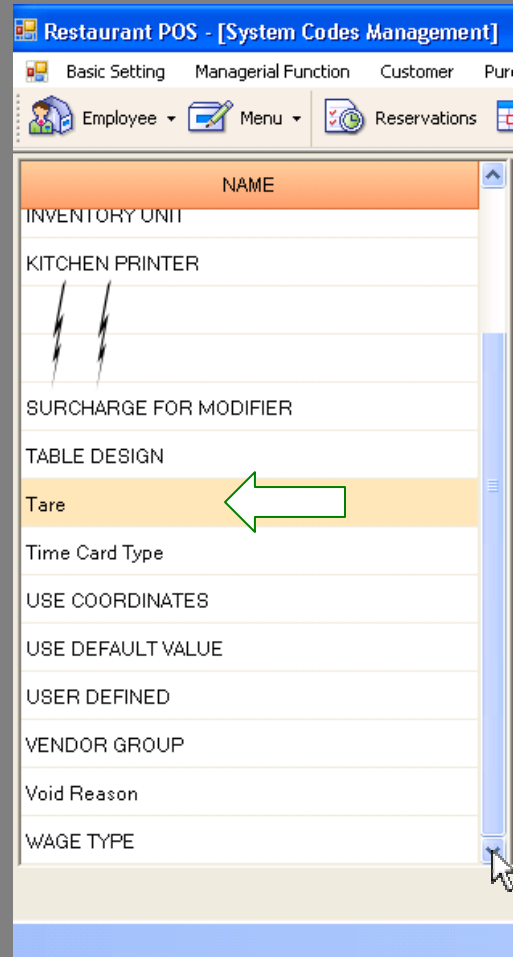
Click on the tab labeled **Basic Settings**, then to **Other Settings** and select **System Codes Management** from the drop-down menu.



Note: The settings found under System Codes Management are very sensitive and may render the POS Terminal unusable. Please check with a Technical Support agent before changing any settings not set forth herein.

Step 3

Scroll to the end of the categories (*NAME*) and select **Tare** (double-click).



Step 4

A) Fill in the **Tare** name box and enter the respective **Cup Weight**.

Tare

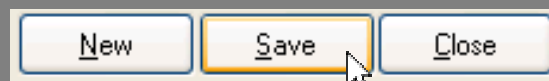
1.8m Cup

Hide

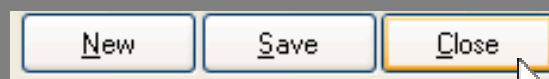
Cup Weight

0.2

B) Click the **Save** button after each entry.

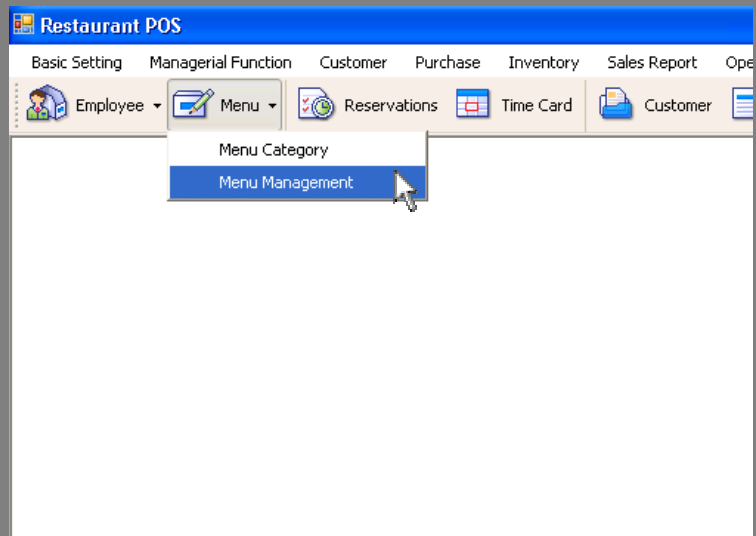


C) When finished adding all of your tare weights, click the **Close** button



Step 5

Click on the tab labeled **Menu** and select **Menu Management** from the drop-down menu.



Step 6

Select the appropriate **Menu Item** and check off the respective box to applicable **Tares To Use**. To "Select All" defined tare settings, click the Parent check box (*Use*).

General	Description	Status
Menu Category	Menu Items	
Menu Name	Frozen Yogurt	
Secondary Name		
Kitchen Alias		
Barcode		
Price		0.50
Menu Cost		0.00
Tax Type	<input checked="" type="checkbox"/> TAX1	Tax Included <input type="checkbox"/>
	<input type="checkbox"/> TAX2	Tax Included <input type="checkbox"/>

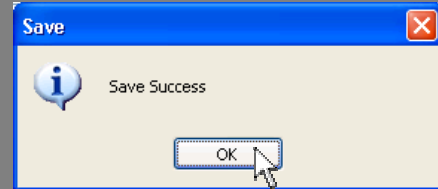
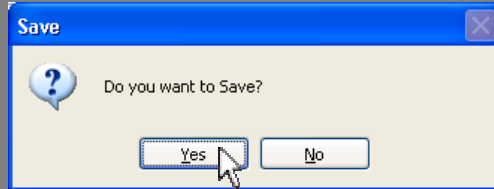
Tares To Use	
<input checked="" type="checkbox"/> Use	Tare
<input checked="" type="checkbox"/>	1 Lg Cup
<input checked="" type="checkbox"/>	1 Md Cup
<input checked="" type="checkbox"/>	1 Sm Cup
<input checked="" type="checkbox"/>	2 Lg Cup
<input checked="" type="checkbox"/>	2 Md Cup

Step 7

A) Click the **Save** button.



B) Click **Yes** and **Ok** for confirmation.

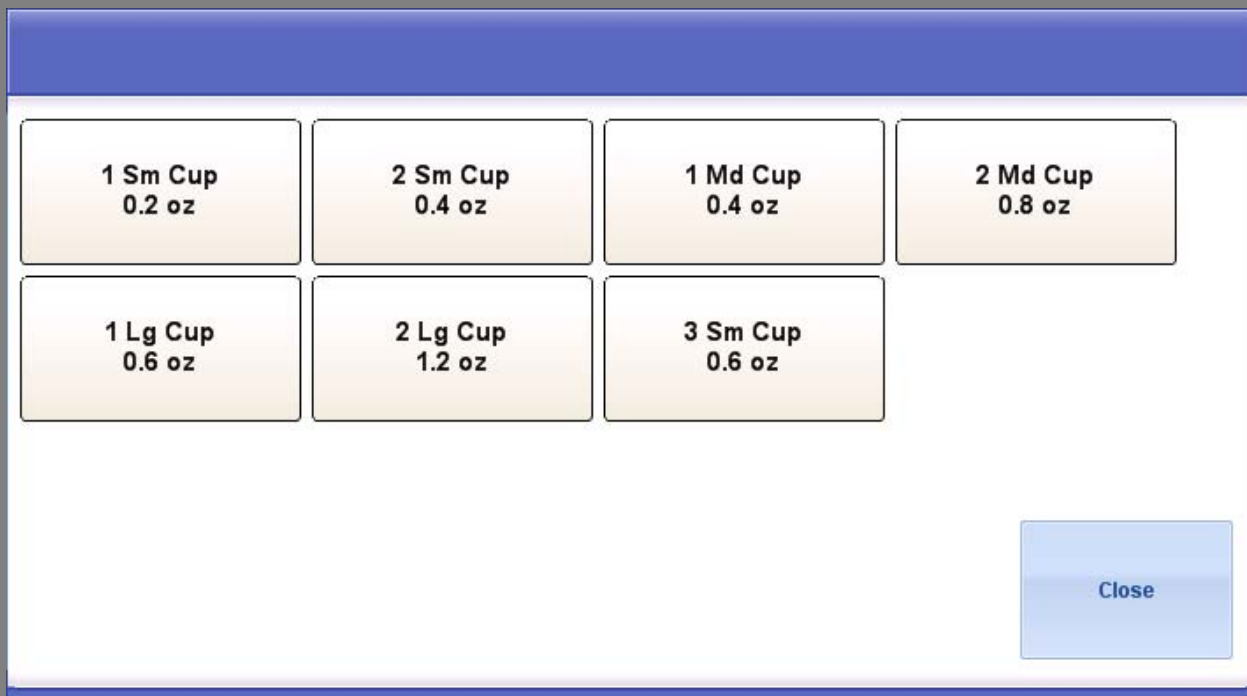


C) Click the **Close** button.



To Use a Tare Weight

In **Quick Serve**, when a cashier is conducting a transaction using an applicable, predefined, **Menu Item**, the defined **Tare Weights** will be displayed once the **Menu Button** is selected.



You may select only one Tare Weight on this screen.